

Basalt & Ceramic Lined Pipework

- for abrasion, corrosion and low friction resistant applications

C.B.P. Engineering Corp., 185 Plumpton Avenue, Washington, PA 15301 USA
Tel: 800-468-1180 Fax: 724-229-1185
Email: info@cbpengineering.com URL: www.cbpengineering.com

C.B.P. Engineering offers a comprehensive range of lining materials designed to combat erosion. Having more than 30 years of expertise in product application. We are a world leader in the field.

Basalt and Alumina Ceramic are the two generally accepted lining materials. Other linings which compliment the Basalt and Ceramic include Eucor, AZS, Silicon Nitride Bonded Silicon Carbide, and Ceramic Filled Epoxy Coatings.

C.B.P. ENGINEERING CORP.

DESIGN * MANUFACTURING * INSTALLATION
ABRASION-RESISTANT CONVEYING AND MATERIALS HANDLING SYSTEMS
A subsidiary of The Greenbank Group, Inc.



Cast Basalt

Cast Basalt is a material formed from Basaltic Rock/Slag combined with crystallising agents. When cast it has two exceptional qualities. First the abrasion resistance, which is the most important factor, is several times higher than that of iron or steel. Second, it has a high degree of chemical resistance.

Cast Basalt is used to line pipework, chutes, bunkers, cyclones and hoppers. Cast Basalt has become the world standard for ash slurry pipework at fossil fuel power stations. An all around cost effective and adaptable lining material that extends the life of equipment affected by erosion.



Alumina Ceramic

Alumina is a cost effective and widely used material in the family of engineered ceramics. Alumina ceramics have been developed and optimised for maximum wear resistance and corrosion resistance. A high density, diamond like hardness, fine grain structure and superior mechanical strength are the unique properties that make it the material of choice for a wide range of demanding applications.

Ceramic has uses similar to Cast Basalt but it has greater resistance to wear in high velocity applications and impact resistance in extreme dynamic systems



CBP
ENGINEERING
CORP
DELIVERING SOLUTIONS

Basalt & Ceramic Lined Pipework

- for abrasion, corrosion and low friction resistant applications

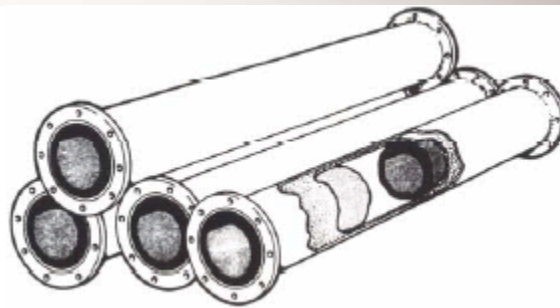
C.B.P. Engineering Corp., 185 Plumpton Avenue, Washington, PA 15301 USA

Tel: 800-468-1180 Fax: 724-229-1185

Email: info@cbpengineering.com URL: www.cbpengineering.com

Industries Served:

- Power Industry (Coal fired & Biomass)
- Coal Mine and Preparation Plants
- Cement & Asphalt Processing
- Pulp & Paper Mills
- Water & Waste Water Treatment
- Mineral Processing
- Steel Industry



CBP Engineering provides its customers with the full range of abrasion resistant lined pipework including Straight Pipe, Bends and Elbows, Reducers, Tees and Y-pieces (See diagrams on the right).

Linings

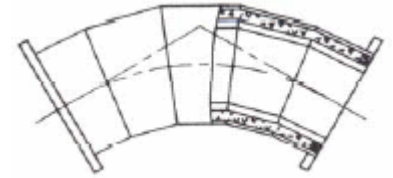
Ceramic tiles range in thickness from 1/4" to 2". Basalt cylinders range in size from 2" I.D. up to 24" I.D. with a thickness of 3/4" to 1". Larger basalt lined diameters are possible using basalt radial tile ranging in thickness from 7/8" to 2".

Flanges

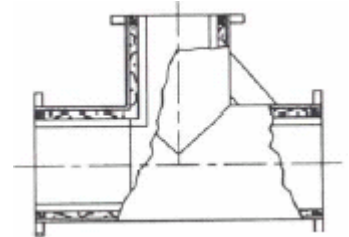
As well as our standard Fixed and Rotating Flanges CBP Engineering also supplies Adaptor Flanges, Dresser Couplings and Victaulic Couplings to suit our customers' applications and requirements.

Finish

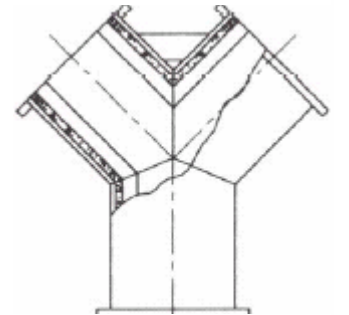
Surface coating is typically a red oxide primer. Other finishes are available to suit our customers' specific requirements.



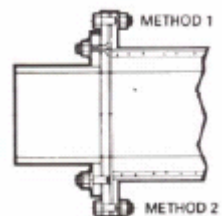
Bend



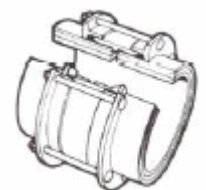
Tee



Y-Piece



Adaptor Flange



Dresser Coupling



Victaulic Coupling

C.B.P. ENGINEERING CORP.

DESIGN * MANUFACTURING * INSTALLATION
ABRASION-RESISTANT CONVEYING AND MATERIALS HANDLING SYSTEMS
A subsidiary of The Greenbank Group, Inc.

CBP
ENGINEERING
CORP.
DELIVERING SOLUTIONS

Delivering Solutions