

# COAL FIRED POWER PLANTS

**C.B.P. Engineering Corp.**, 185 Plumpton Avenue, Washington, PA 15301 USA  
Tel: 800-468-1180 Fax: 724-229-1185  
Email: info@cbpengineering.com URL: www.cbpengineering.com

**C.B.P. ENGINEERING CORP.**

DESIGN \* MANUFACTURING \* INSTALLATION  
ABRASION-RESISTANT CONVEYING AND MATERIALS HANDLING SYSTEMS  
A subsidiary of The Greenbank Group, Inc.

**CBP**  
ENGINEERING  
CORP  
DELIVERING SOLUTIONS

## APPLICATIONS/PRODUCTS

### Bottom Ash Systems

- Discharge Pipework and Fittings
- Combining Tubes
- Pump Suction Lines
- Expansion Joints
- Hopper Linings
- Drag Chain Conveyor Linings



### Economizer/Fly Ash Systems

- Conveying Pipework and Fitting
- Air Separator Tanks



### Pyrites Systems

- Pipework and Fittings
- Tank Lining



### Coal Handling

- Bunker Linings
- Chute Linings
- On Site Installation

### PF Systems

- Mill Crossover Pipework
- Classifier Cones
- Turret Liners
- Exhauster Linings
- Mill to Burner Pipework
- Feed Bunker Linings
- Mill Feed Pipework
- Burner Linings
- Mill Dampers
- Riffles/Splitters



### FGD Systems

- Limestone Feed & Return Pipework
- Tank Linings
- Ball Mill Feed
- Waste Disposal Pipework



*Delivering Solutions*

# COAL FIRED POWER PLANTS

## PRODUCTS

### BASALT LINED PIPE & FITTINGS



**BOTTOM ASH PIPEWORK**



**FLYASH PIPEWORK**

### CERAMIC LINED PIPE & FITTINGS

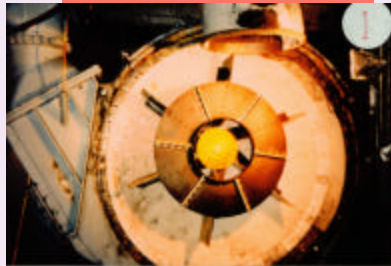


**PULVERIZED FUEL ELBOWS**



**FLYASH ELBOWS**

### CERAMIC TILE



**EXHAUSTER LININGS**

### BASALT TILE



**BUNKER LININGS**

### VACUUM BONDING



### EUCOR



### SILICON CARBIDE



**C.B.P. ENGINEERING CORP.**

*Delivering Solutions*

**C.B.P. Engineering Corp.**, 185 Plumpton Avenue, Washington, PA 15301 USA

Tel: 800-468-1180 Fax: 724-229-1185

Email: [info@cbpengengineering.com](mailto:info@cbpengengineering.com) URL: [www.cbpengengineering.com](http://www.cbpengengineering.com)